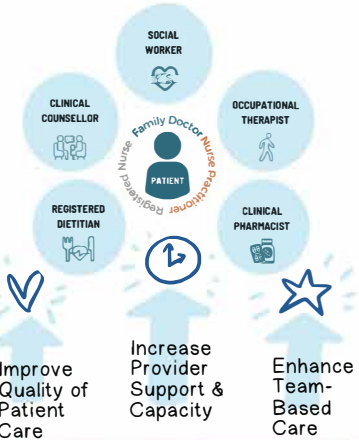


## THE PCN INTERPROFESSIONAL TEAM

## HOME AND COMMUNITY CARE SERVICES

## OLDER ADULTS MENTAL HEALTH AND SUBSTANCE USE



### SUPPORTS PATIENTS WITH:

- ✓ Short-term, goal-oriented care
- ✓ Education
- ✓ Self-management and behavioural
- ✓ Strategies of life promotion
- ✓ Evidence based decision-making
- ✓ Assessment and brief intervention
- ✓ Links to community resources

To check on your eligibility for PCN Supports, please contact your Community Network Manager



**SUPPORTING FRAIL SENIORS IT TAKES a COMMUNITY**

Visit the website

Provide a range of supports and services for people with acute, chronic, and palliative health care needs such as home health services, mental health services and home support.

Services are intended for people who have ongoing or chronic health issues requiring support to continue to **live safely at home**.

Services support patients who need care at home:

- to prevent acute episodes leading to hospitalization
- post hospitalization to support recovery and prevent readmission
- to support clients with a life limiting illness needing help with activities of daily living

Vancouver  
Tel (604) 263-7377  
Fax (604) 267-3419

Visit the website

Serves older adults (generally aged 65+) with mental health conditions and/or problematic substance use which have an adverse effect on function, health status and/or quality of life, or with progressive dementia (at any age) that is complicated by moderate to severe behavioural and/or psychiatric symptoms.

Services offered are based on individual's clinical needs:

- Geriatric psychiatric assessment, consultation & treatment
- Case management & care coordination
- Medication review & monitoring
- Therapeutic groups
- Psychoeducation & family support
- Substance use counselling

Monday to Friday  
8:30-4:30.  
Referrals can be submitted directly to the OA MHSU Program.  
604-709-6785  
Intake Line



### Family Caregivers of British Columbia

Caregiver Toll-Free Support Line  
1-877-520-3267  
Mon-Fri  
8:30am - 4pm



ASK CAREGIVERS: are you OK?

Referral process involving health care provider

34% HAVE a CAREGIVER in DISTRESS

I'm FINE... I'M FINE...

familycaregiversbc.ca

### 211 British Columbia



211 connects you to non-emergency community health + social services - IN YOUR AREA

24/7 LANGUAGES

24/7

FREE

bc.211.ca

### Nidus

Protect and maintain your self-determination

NIDUS is an EXPERT on REPRESENTATION AGREEMENTS

Education, support and assistance with personal and health-care planning



Empowering adults to form a legal plan for their present or future healthcare needs, should they no longer be able to speak for themselves.

nidus.ca

### PGT Public Guardian and Trustee of British Columbia

Available to Consult on complicated situations

Make health care and/or care facility admission decisions when:

- An adult is determined to be incapable of making proposed healthcare decisions
- PGT is the adult's Committee of Person or there are no family/friends who meet the criteria to act as temporary substitute decision maker (TSDM) or substitute decision maker (SDM)

SUBMIT REFERRALS BY EMAIL, TELEPHONE OR FAX

trustee.bc.ca